



PORTBLUE CLUB POLLENTIA RESORT & SPA



SUSTAINABILITY REPORT (Indicators 2018-2020) September, 30th 2021



A sustainability indicator is any economic, social, political, or biological element that provides information about certain aspects of the natural world, environmental policies or other related economic and social factors. **A sustainability indicator system enables us to make strategic, environmental and social decisions and helps us to turn this information into action.**

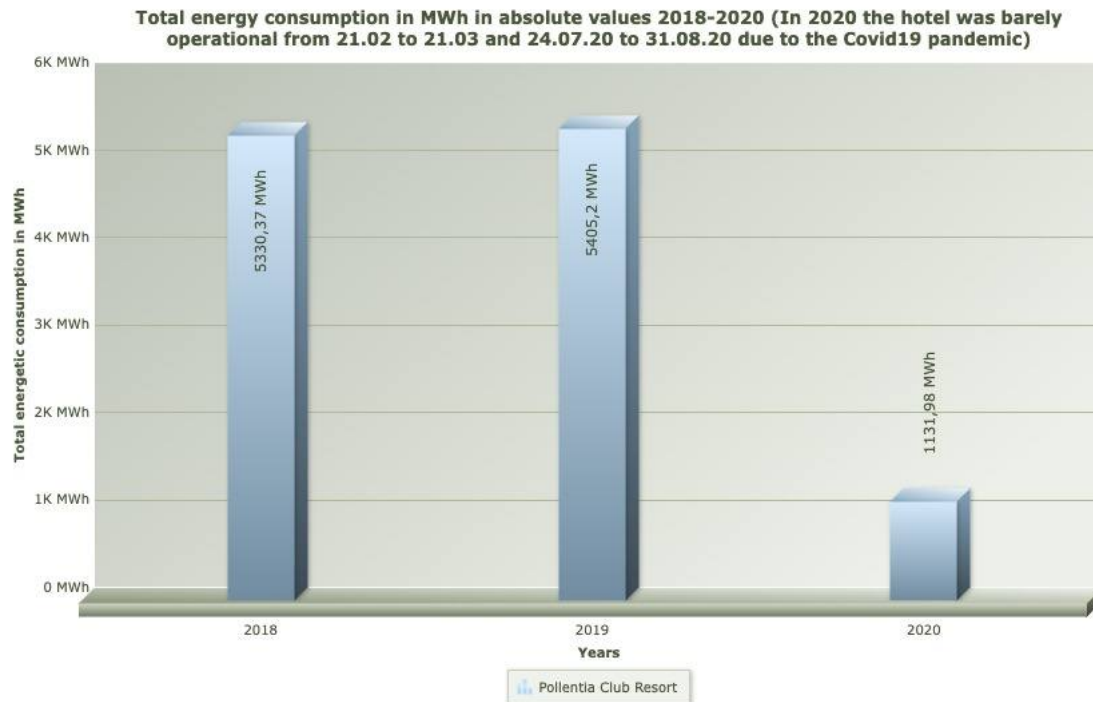
We use the tool Sustainablekeyindicators.com, based on the GRI (Global Report Initiative), the international guide more used for sustainable development and indicator guidelines.

The aim of this management is to evaluate sustainable behavior to provide us information in order to ascertain whether our organization has the ability to meet the established requirements, whether these be legal requirements or ones to which the Management or third parties must adhere (ISO 14001:2015 norms, the European EMAS regulation, Travelife System,...)

Portblue Club Pollentia Resort & Spa is a member of the Sustainable Hotels net in Balearic Islands



ENERGETIC CONSUMPTION ENERGETISCHE VERBRAUCH



We transform all the energy consumed (Electricity, diesel and LPG) during the last three years. The hotel was only operational for 69 days in 2020 from 21.02 to 21.03 and 24.07 to 31.08.20 due to the Covid19 pandemic. It is not appropriate to show the total consumption data in MWh by stay.

Total energy consumption by stay in 2019 was 0.023 MWh / est

Total energy consumption by stay in 2018 was 0.022 MWh / est

Consumos de electricidad, gasoil y GLP por estancia en MWh (estancia: un cliente por un día)

Electricity, diesel and LPG consumption per stay in MWh (stay: guest per day)

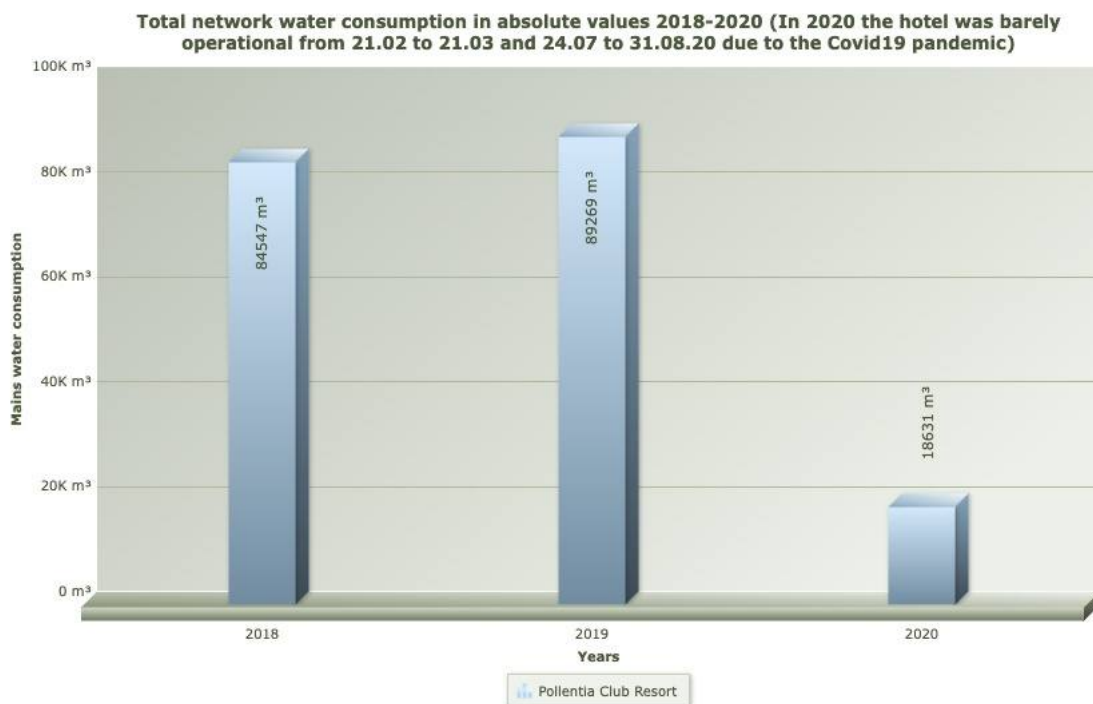
Strom, Diesel und LPG Verbrauch per Aufenthalt in MWh (Aufenthalt: Gast pro Tag)

We have LED lighting in most of the areas of the hotel and have a preventive maintenance plan that allows us to ensure the best performance of our energy facilities.

Every year we set new goals and challenges in reference to energy consumption, always guaranteeing the comfort of our customers.



WATER CONSUMPTION / WASSER VERBRAUCH



The hotel was only operational for 69 days in 2020 from 21.02 to 21.03 and 24.07 to 31.08.20 due to the Covid19 pandemic. It is not appropriate to show the data for total network water consumption by stay.

Total stay ratio network water consumption in 2019 was 376 liter/stay.

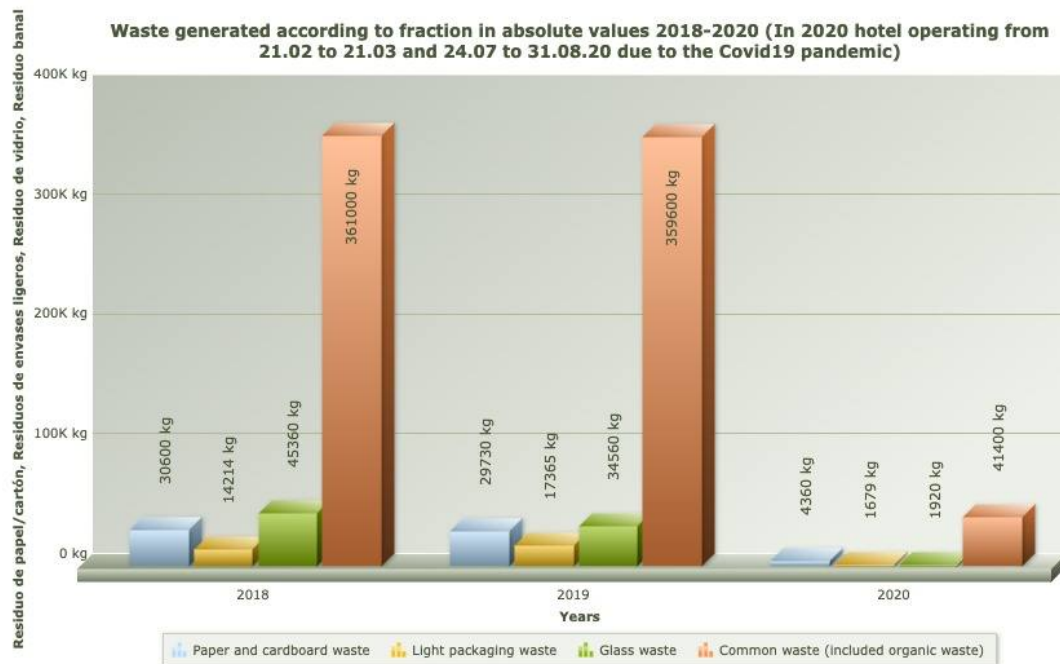
Total stay ratio network water consumption in 2018 was 355 liter/stay.

We monitor daily the water consumption at the hotel, thanks to the installed counters. We have quality regulators in our taps which combine modern comfort with sustainable consumption.

We also monitor daily, water consumption for swimming pools and osmosis system



GESTIÓN DE LOS RESIDUOS / MANAGEMENT OF WASTE BEWIRTSCHAFTUNG VON ABFÄLLEN IN PORTBLUE CLUB POLLENTIA RESORT & SPA



The hotel was only operational for 69 days in 2020 from 21.02 to 21.03 and 24.07 to 31.08.20 due to the Covid19 pandemic. It is not appropriate to show the data of waste generated by stay in 2020. The generation of waste by fraction per stay in 2018 and 2019 was as follows.

Paper and cardboard 0,129 kg in 2018 and 0,125 kg in 2019

Light packaging 0,060 kg in 2018 and 0,073 kg in 2019

Glass 0,191 kg in 2018 and 0,146 kg in 2019

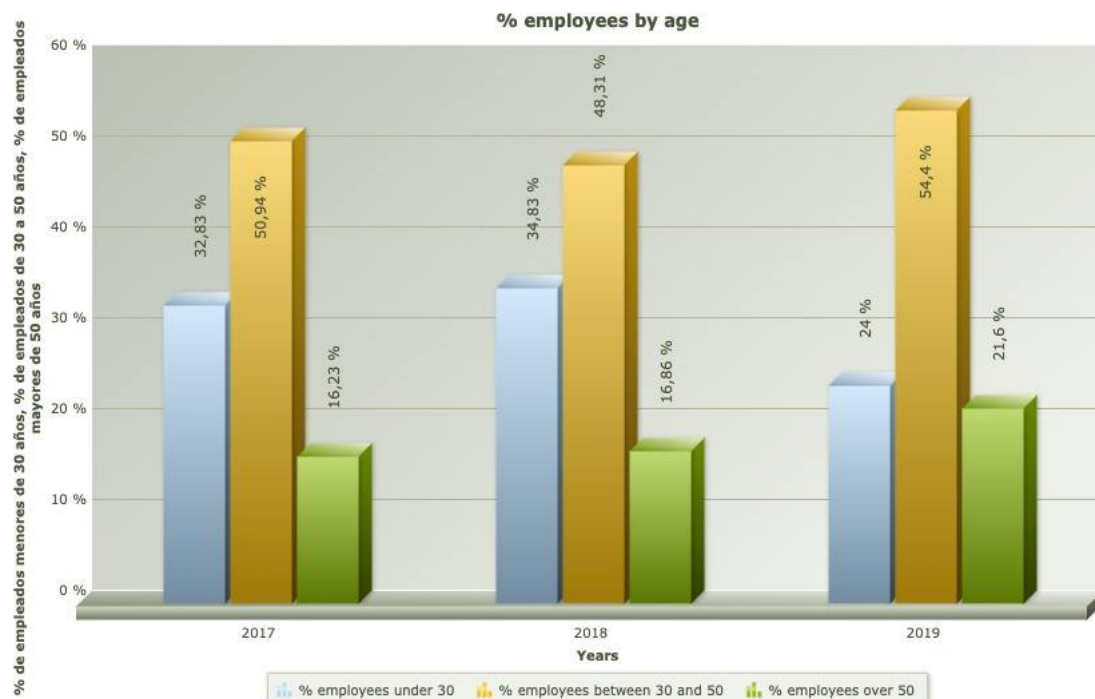
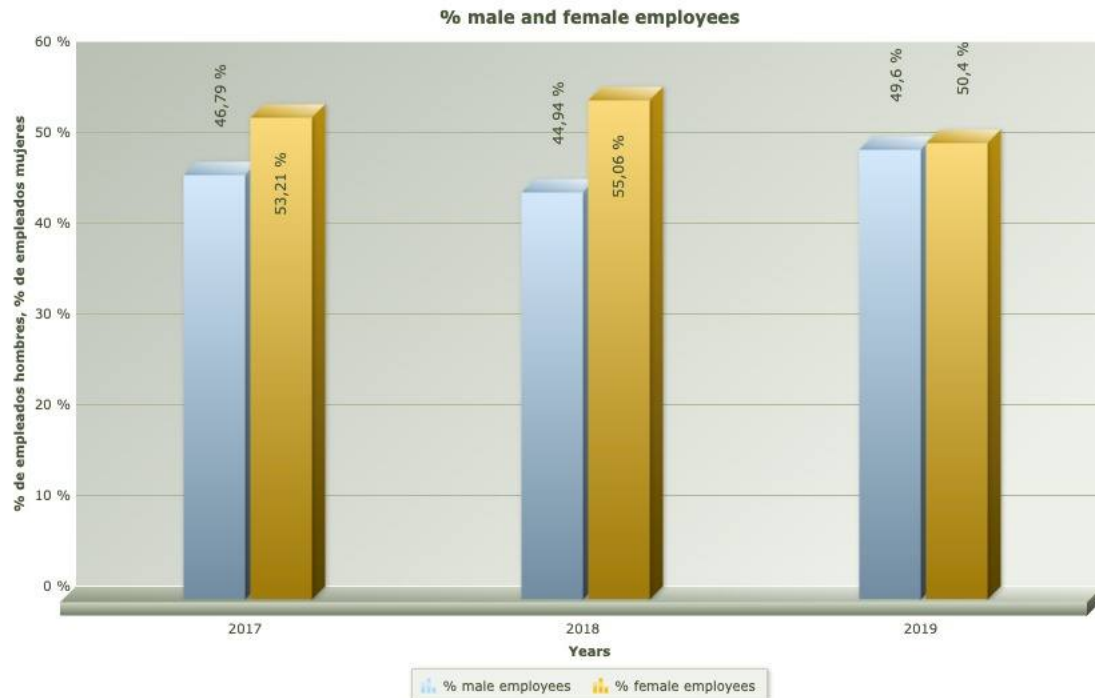
Banal waste (including Organic waste) 1,517 kg in 2018 and 1,515 kg in 2019

COLABORE CON NOSOTROS SEGREGANDO SUS RESIDUOS

SPREAD YOUR WASTE
VERTEILUNG IHR ABFÄHLL

SU CAMARERA DE LIMPIEZA TAMBIÉN SELECCIONARÁ SUS ENVASES Y REVISTAS SI LAS DEJA A LA VISTA. **YOUR CLEANING WAITRESS WILL ALSO SELECT YOUR PACKAGING AND MAGAZINES IF LEFT IN SIGHT.** IHRE ZIMMERMÄDCHEN WIRD AUCH IHRE PACKAGING UND MAGAZINE WÄHLEN.







The Arenal of Sa Marina

Near the 65,800 kilometer point of the Ma-2220 road there is a direct access to the beach. When you step on it, you can see the gray color of the sand. Along this sandy beach it is very likely to discover some egret (*Egretta garzetta*) or some flock of plovers, wasps and small (*Charadrius dubius*), some yellow-headed gulls (*Larus michahellis*), or Audouin's (*Larus audouinii*), or perhaps some cormorants (*Phalacrocorax aristotelis*) passing, flying low.

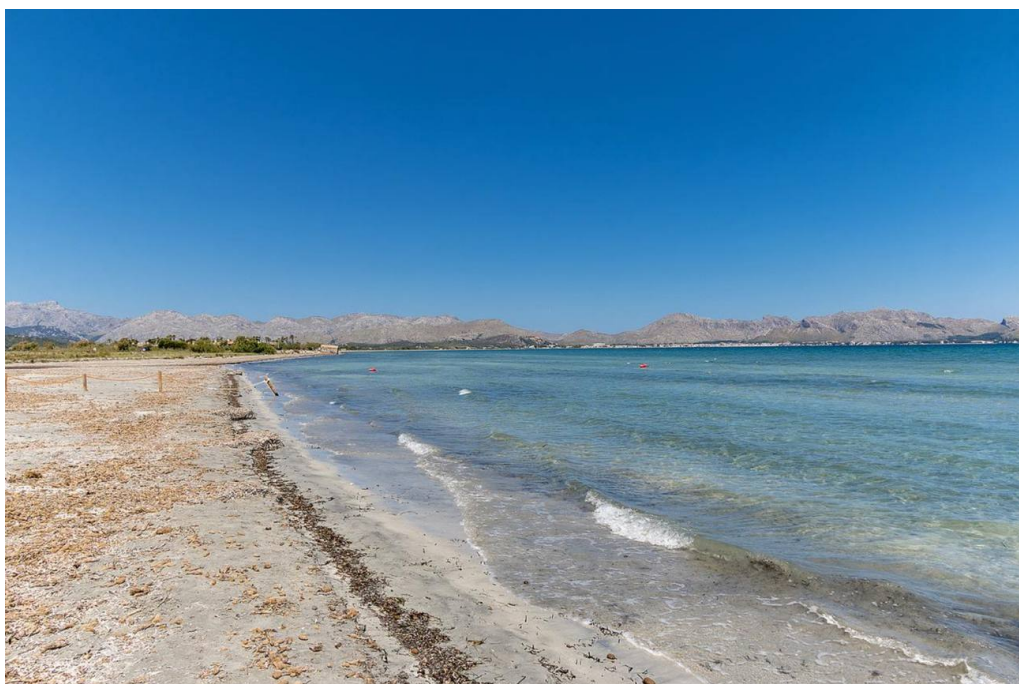
In the first line, the waves delimit a space where the plant presence is practically null, if the remains of posidonia are excepted. After this area, the winds, salinity, strong sunstroke and mobile sand - where the water sneaks in and evaporates very easily - make up a little cozy environment for plant life that, nevertheless, manages to colonize it. Small grasses help fix the dunes, and are anchored with an extensive underground stem -rhizome-, from which new roots and stems emerge. Further back, the baron (*Ammophila arenaria*) -of larger dimensions-, which is accompanied by other species with particular strategies that favor survival: the sea lily (*Pancratium maritimum*), with an underground bulb to store nutrients, sea radish (*Cakile maritima*), with long and developed roots, sea thistle (*Eryngium maritimum*), pointed and very attractive to insects, maritime milkweed

LOCAL COMMUNITY INFORMATION

(*Euphoria paralias*), with irritating latex ... Along the route , near the road, there is some specimen of tamarisk (*Tamarix* sp.). They are deciduous trees that can exceed four meters high, with reddish bark and small leaves. They bloom between spring and summer with dense pink or off-white spikes.

Advancing along the seashore, after the storms, you can see the covered sand of *Posidonia oceanica*, popularly called "seaweed", even if it is a marine, herbaceous plant, with stem, roots and leaves that can reach 50 centimeters. When the remains of the *posidonia* are mixed with the sand, the well-known balls are formed. Traditionally, man has collected the *posidonia* to pay the fields. This collection was especially important when chemical fertilizers were not used and *posidonia* was, together with the anthill, animal manure or crop rotation, the only way to improve the fertility of the fields. Today it is known that the results are not entirely optimal, since the nutrients of the *posidonia* are slowly incorporated into the earth and cause a certain degree of salinization. *Posidonia* protects the sand from the onslaught of waves; The regulations of the Reserve regulate its withdrawal to conserve the beach. The withdrawal of *posidonia* during winter and the use of heavy machinery is avoided.

A few steps from the last houses of Sa Marina is the bridge called Pont des Grau. The opening to the sea of s'Albufereta gives us beautiful images of the surroundings. In times of flooding, the bridge is the only feasible step. The wetlands have at this point a mud thickness of almost 5 meters, and the bridge, 40 meters long, had to be anchored on concrete pillars. The Pont des Grau, along with the one that rises at the mouth of the Sant Jordi torrent, further north, allowed the completion of the coastal road project between Port de Pollença and Alcúdia. This was a historical claim of the neighbors to avoid going around the wet area by land. The work began, belatedly and for strategic interest, during the Civil War. The road was built by Republican prisoners as forced labor, but the works - including the bridge - did not end until the conflict ended, when it was already considered that this would be a route of great tourist interest.



LOCAL COMMUNITY INFORMATION

Can Cap de Bou Beach

Can Cap de Bou is 4.5 kilometers from Port de Pollença. This beach is located next to Club Pollentia, on the road that makes an artificial border between sea and land, and nearby is s'Albufereta (150 hectare wetland). This quiet sandy beach is characterized by its great length and extreme narrowness. This morphology is a product of the erosive action of the sea currents plus the whip of the north and northeast component wind. This last element makes this stretch of coast very visited by windsurfers and surfers looking for these air gusts and the formation of curly waves.

This beach has leaded sandy sections with remains of posidonia alga and other pebbles, as well as a non-existent slope, which forces the swimmer to walk tens and tens of meters to reach this qualifier. This characteristic is repeated throughout this rada with sand, stone, seaweed and mud bottoms, which attracts anglers. The nearest maritime facility, Port de Pollença, is 2.4 miles away. The influx of local bathers and tourists, the residents of the next Pollentia Club, is low.

Along this coast several machine-gun nests were built that formed a defense line on the coast of Mallorca during World War II, to deal with a possible landing of the Allies, which never occurred. The construction of the road destroyed the dune system and altered the natural dynamics of the beach. Towards the end of the tour, and near the hotel complex, there are abundant, between the blocks that defend the road, the sea fennel (*Crithmum maritimum*) and the lemon (*Limonium* spp.), With flowers pulling lilac and fine stems, a often visited by the butterfly of thistles (*Cynthia cardui*).



LOCAL COMMUNITY INFORMATION

S'Albufereta Nature Reserve

The coastal wetland of s'Albufereta constitutes one of the jewels of Pollença Bay, both for its special landscape and for the ornithological and botanical values it contains.

The Nature Reserve protects an area of 211 hectares and around 290 hectares of its periphery of protection have regulated some activities and uses to avoid unwanted impacts on it.

S'Albufereta was declared a Natural Reserve by Decree 121/2001 (BOIB No. 130, of October 30, 2001) and four years later it was re-qualified as a Special Natural Reserve by Law 5/2005, of May 26, on the Conservation of the Environmental Relevance Spaces (LECO). S'Albufereta Natural Resources Management Plan was approved by the Government Council Agreement on October 19, 2001 (BOIB No. 130, dated October 30, 2001). However, since 1991, a natural area of special interest was already declared through Law 1/1991, of January 30, on Natural Spaces and Urban Planning of the Special Protection Areas of the Balearic Islands (LEN)

In addition, s'Albufereta is also part of the Natura 2000 Network, composed of different European natural areas whose objective is to contribute to the conservation of natural species and habitats.



Pollença Bay

This environment is one of the most praised landscapes of Mallorca. At the southern end of the horizon, the bay is closed by the Alcúdia peninsula, where the coastal urbanizations of Corral d'en Bennàsser and Es Barcarès are identified, the profiles of the city of Alcúdia and the culminating reliefs, the Victoria watchtower and the Penya des Migdia. To the north, the Port de Pollença and the tip of l'Avançada are distinguished, with the background of the Formentor peninsula. To the

LOCAL COMMUNITY INFORMATION

west you can admire the closest elevations of the Serra de Tramuntana: the Puig de Maria, the Puig Gros de Ternelles, the Cuculla de Fartàritx, and the mountains of Ca de Miner, Tomir, Massanella.



Information of interest of Alcúdia

Alcúdia is located northeast of Mallorca, between the bays of Pollença and Alcúdia. It borders the towns of Pollença, Sa Pobla and Port d'Alcúdia as well as having more than 30 kilometers of coastline. Within its territory is Pol·lèntia, an archeological area of great historical and tourist interest. Its population centers are twelve: Alcúdia, Sa Marina, Corral d'en Bennassar, Barcarés, Morer Vermell, Manresa, Mal Pas, Bonaire, Albufera, Mar i Estany, Moll and Alcanada.

Alcúdia is one of the spaces of Mallorca with a history, a geography and a very unique social dynamic. It is a city where history is very much alive. The two enclosures of walls, one medieval and one Renaissance, make Alcúdia especially attractive for its historical character. Alcúdia was founded as a village by King Jaume II in 1325. Emperor Charles I of Spain and V of Germany granted him the title of Most Faithful City.

The municipality of Alcúdia is located in the northeast of Mallorca forming a peninsula of 60.51 km², between 2 bays, with many kilometers of coastline. This coast, in some places is formed by sandy beaches and in others it becomes steep coast with small coves of stones, all of them with a crystalline water.

LOCAL COMMUNITY INFORMATION

The social dynamic is what has allowed the current tourist infrastructure, based on professionalism and diversity. In Alcúdia, tourists and visitors are offered a stay with many possibilities: history, culture, beach, mountains, wetlands and the touch of fun they may need.

The city of Alcudia has a medieval urban layout, conditioned by the two enclosures of walls that surround it. The streets are narrow and irregular, some buildings retain characteristic elements of the time of splendor of the city and are of great architectural value.

Alcudia is currently dedicated entirely to the tourism industry and has more than 29,000 hotel beds. The commercial port of Alcudia has specialized in the reception of electrical energy that, apart from Mallorca, also supplies Menorca. On the other hand, a considerable number of merchandise arrives through this port. At the moment the city of Alcudia is consolidated as the second pole of urban development after Palma, as a result of the important economic activity that is generated.

The city of Alcudia and the archeological zone of Pol·lència were declared a Historic Artistic Site by Decree 21/41 of July 20, 1963. In recent years, various plans have been put in place to conserve and recover these areas. The Consortium of the Roman City of Pol·lència, an entity formed by the Government of the Balearic Islands, the Consell de Mallorca and the Alcúdia City Council, has been created to maximize recovery.

The offer of accommodation is scattered, there are establishments in the area of Can Cap de Bou, Moré Vermell, Mal Pas, Alcanada, Puerto de Alcúdia (the highest concentration, but mixed with residential area), in the historic center (inland hotels) and some agritourism. The supply of villas grows gradually



Cultural heritage

The cultural, heritage and leisure offers offered by the nearby surroundings around the hotel are informed from the website itself and the reception Hobby Club. Detailed and exclusive information of parties, events, markets, fairs, shows, traditions and gastronomy of the villages of Alcudia and Pollença, as well as the natural area of special interest of s'Albufereta.

LOCAL COMMUNITY INFORMATION

- ❖ **The walls of Alcúdia, an artistic historical complex.** The strategic situation of the town of Alcúdia - which since Roman times was appreciated and recognized - also exposed it to the dangers of being near the coast. King Jaume II prepared a protection system, the wall, with a double motivation: to defend the local population and constitute a safe place to the northeast of the island in case of external attack.

At the fourteenth century begins the construction of the walls that does not end until the end of the same century. A quadrangular structure reinforced with 26 towers is proposed, distributed along a perimeter of 1.5 km, with an average height of 6 meters. In addition to a valley on the outside that is still preserved. This defensive construction delimits the historical core of the city of Alcúdia. Throughout the centuries the walled enclosure was subjected to successive modifications. This happened after the Germanic War (1523), when the enclosure was reinforced with three bastions: Xara, Vila Roja and Església.

At the end of the 19th century, part of the modern walls collapses, while the protection for this architectural asset begins to be claimed. This effort will pay off in 1974 when the walls are declared "Historic Artistic Ensemble".

The walled area of Alcúdia is permanently open.



LOCAL COMMUNITY INFORMATION

- ❖ **Via Fora, history of Alcúdia in theater.** Via Fora is about dramatized historical tours, a new vision of the walls of Alcúdia. A visit to the past to bring people closer to their walls and a way to get everyone, tourists and visitors especially to enjoy what is undoubtedly one of the most identifying characteristics of Alcúdia. Five scenes compose it, in this order: The construction of the Murades, The Germanies, The attack of the Turks in Alcúdia, The Yellow Fever and Memories of "coffee of Plaça".

Scenes;

1st 14th century: Construction of the walls. War between Pere el Cerimoniós and Pedro el Cruel and the construction of the walls of Alcúdia, started by Jaume II of Mallorca in 1300. Porta de Moll

2nd XVI century: Guerra de les Germanies, 1521. The resistance of Alcúdia, faithful to Emperor Charles. Stairs of the Church of Sant Jaume

3rd The Turkish attack: The coast of Alcúdia is full of watchtowers for possible maritime attacks, as in the case of the Turks legitimized by the king of France. Port of Sant Sebastià

4th 19th century: Yellow Fever. Palma declares yellow fever, of which Alcúdia has an advantage in its protection thanks to the walls. Ronda Road

5th Century XX: Memories of "Café de Plaça". Tribute to Alexandre Cuéllar and his work set in Alcúdia. Stage Pont de La Vila Roja



- ❖ **Pol·lència.** The Roman City of Pol·lència is one of the archaeological jewels of the Balearic Islands. Founded in the first century BC by the Roman Consul Quinto Cecilio Metelo retains important structures such as the theater, the forum, La Portella ... The Romanization of the Balearic Islands can be studied thanks to the existence and constant archaeological excavation of this city and the pieces that It houses the Monographic Museum of Pol·lència.





- Portblue Club Pollentia Resort & Spa is a member of the Sustainable Hotels Net of Balearic Islands, an association of hotels that have all committed to more responsible tourism. The associates share experiences, in addition to their environmental and social indicators, so that we can compare ourselves with the average of the rest of the establishments, providing the Portblue Club Pollentia Resort & Spa also their data for the average.



- Bottle caps for a new life**

For several years, plastic caps have been collected internally in all departments and in this way they collaborated in favour of the “Fundación Seur” campaign in which the money raised with the collection of caps was used to help children with cerebral palsy.



(Photo collected 2018)

In 2020, as part of our social responsibility, we have joined the solidarity caps campaign to help the “ARKA Foundation”, collecting the plastic caps that are generated in the hotel and encouraging clients and workers to do the same, in one action solidarity and ecological. Therefore, the funds obtained from the recycling of these caps are destined to help children with cerebral palsy.



ARKA tapones solidarios
8 horas · 🌐

Y desde Port Blue Hotels nos llegan estos tapones a la recicladora para seguir sumando, esta recogida es gracias a la colaboración de todos los trabajadores de las instalaciones.

Colaboraciones molonas 🍷!!!!

♥♥♥♥♥♥♥♥♥♥♥♥♥♥♥♥

Puntos de recogida en Palma;
Eroski de Son Moix y el Conservatorio
Recicladora Plarema en el polígono de Can Calero (Horario de 7 a 15 hrs.)



ARKA tapones solidarios
11 de agosto a las 10:02 · 🌐

Y con este gesto tan bonito colabora una turista alojada en Port Blue Hotels.

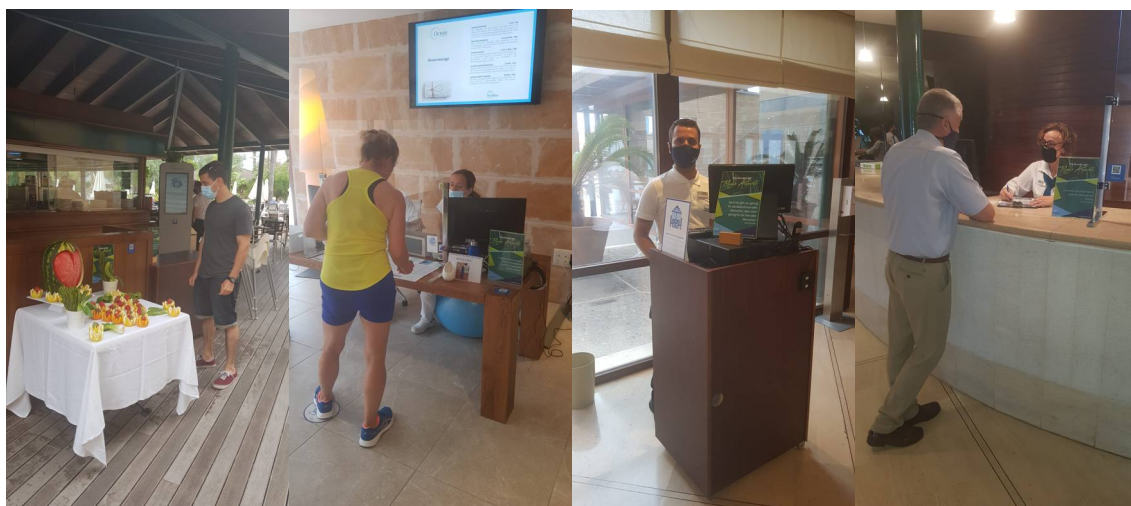
♥♥♥♥♥♥♥♥♥♥♥♥♥♥♥♥



- Participation in the **World Environment Day campaign, June 5**

Every year, on June 5, Portblue Club Pollentia Resort & Spa promote the World Environment Day. United Nations provide every year ideas about the campaign, for example in 2018 it was about the urgently needed reduction of disposable plastics, and in 2019 about the urgency of governments, industry, communities, and individuals to commit to reduce the air pollution.





- **Collaboration agreement between the “Alcudia” Institute educational center for the development of training practices in workplaces**

Annex 3

Acord número 312

Acord de col·laboració entre el centre educatiu i el centre de treball per al desenvolupament de les pràctiques formatives en centres de treball

• Partes

Antecedents

1. L'objectiu del present Acord és la col·laboració, entre les parts signatàries, en el desenvolupament d'un programa formatiu de pràctiques formatives en centres de treball que ha de realitzar l'alumnat en el marc de l'ensenyament corresponent.
2. La Llei orgànica 2/2006, de 3 de maig, d'educació, al llarg del seu articulat regula les pràctiques formatives en centres de treball en els diferents ensenyaments.
3. L'Ordre del conseller d'Educació i Cultura, de 15 de juny de 2010, per la qual es regulen les pràctiques formatives en centres de treball, regula dins l'àmbit de la Comunitat Autònoma de les Illes Balears les pràctiques formatives que realitza l'alumnat en el marc dels corresponents ensenyaments cursats.

Ambdues parts es recometen mútuament la capacitat legal necessària per formalitzar aquest Acord, així com les següents

Clausules

1. L'objecte d'aquest Acord és establir el marc de col·laboració entre les entitats a les quals representen per al desenvolupament de les pràctiques formatives en centres de treball de l'alumnat que cursa els ensenyaments establerts en la normativa vigent.
2. La duració de l'Acord ha de ser d'un any a partir de la seva signatura. En qualsevol moment abans de la finalització del termini previst, els signants poden acordar unilateralment la pròrroga per un període de fins a quatre anys addicional a la seva entitat.
3. La col·laboració s'ha de concretar en les actuacions que figuren al document annex.

Com a mostra de conformitat, signem aquest Acord en dos exemplars.

Signat a ALCÚDIA, el dia 15/09/2019
Per la direcció del Centre Educatiu
CENTRE DE LES ILLES BALEARS

Per la representació de l'empresa col·laboradora
PORTBLAU

- **Collaboration agreement** with the Department of Education, Culture and Universities of the Balearic Islands to favor the provision of training corresponding to the **basic professional training cycle of Cooking and Restoration** to the “**IES Guillem Cifre de Colonya de Pollença**”



- **Collaboration contract** with the company “**Ideas Consultora de Formación S.L.**” for the realization of **professional non-work practices in companies**

EXPONEN

1. Que la entidad IDEAS ha impartido el curso de Executive Housekeeping Manager.

2. Que dicho proyecto contempla la realización de prácticas profesionales no laborales en empresas.

3. Que la empresa PORTVI, S.A.- HOTEL CLUB POLLENTIA RESORT, está interesada en colaborar con la entidad IDEAS en la realización de las citadas prácticas. El número de participantes en la realización de las correspondientes prácticas es de **2 alumnas**.

4. Que la colaboración en la realización de las prácticas implica, por parte de la empresa, la designación de un tutor encargado del seguimiento de las mismas, comprometiéndose la empresa a llevar a cabo dicha designación con anterioridad al inicio de las prácticas.

Por lo anterior, ambas partes deciden suscribir el presente acuerdo, que se registrará por las siguientes

CLÁUSULAS

Primera. El presente acuerdo tiene como objeto la realización de prácticas profesionales no laborales en el centro de trabajo HOTEL CLUB POLLENTIA RESORT, en la Crta. Alcudia - Pto. Pollença Km.2, 07400, Alcúdia, Illes Balears Palma.

Segunda. Las partes adquieren los compromisos que a continuación se describen:

A. Por parte de la entidad IDEAS:

1. Seleccionar las personas que vayan a realizar las prácticas objeto de este acuerdo (alumnas de Ideas Consultora).

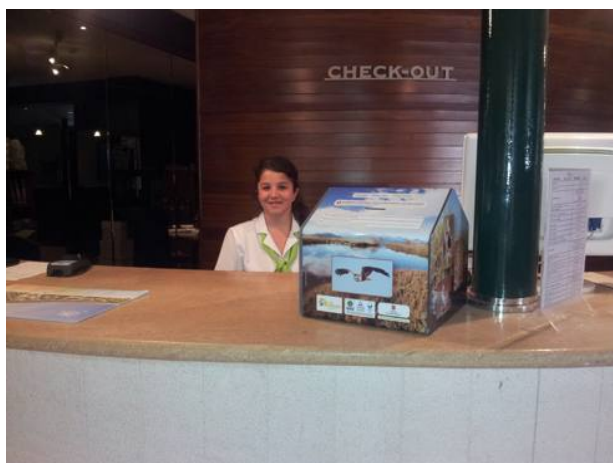


- Portblue Club Pollentia Resort & Spa created by private initiative, in 2013, an **Interpretation Center of the Natural Reserve** with information panels on Habitats of special interest, the most emblematic birds, botanical singularities, map with routes, permits and user restrictions, and the ornithological calendar with the species sighted, thus contributing to the greater knowledge of the clients and the public in general, of the natural value of this protected Reserve. The panels invite customers and the general public to voluntarily make donations, for the conservation of this place by requesting more information at the Reception.





- **Collaboration agreement with the Albufereta Nature Reserve and the Ministry of Environment of the Balearic Government** to donate the amount collected by customers annually and donate by Club Pollentia the same capital that has been collected from donations from customers, thus doubling the amount.



- Edition of **information panels** on the **natural value** of the beach in front of the hotel, Playa de “C’an Cap de Bou”, on the **Oceanic Posidonia**



This panel also includes information on other nearby beaches in the municipality of Alcudia and Pollença, promoting awareness of the assets of our municipality. This measure has reduced human pressure on this natural beach, diverting visits to the beaches closest to urban areas or less exposed to pressures or threats, an action of great interest to the Ministry of Environment of the Balearic Islands.

- Participation in the **Good Practices Guide in CSR** promoted by the FEHM

It is an initiative born from the Hotel Business Federation of Mallorca (FEHM) that under the motto “KNOW, ACT, TRANSFORM” intends to support the companies associated with the FEHM in their journey towards Corporate Social Responsibility.

Portblue Club Pollentia Resort & Spa presented the collaboration agreement with the DG of the Reserve of “s'Albufereta” and the Ministry of Environment for the improvement of the protection and dissemination of the values of this space and participated in the elaboration contributing its good practices both in the Guide and in the exhibition video.



- The Hotel has since 1997 and renewed annually, in recognition of the effort made in favor of the environment, the distinctive "**ECOTURISTIC**" granted by the Townhall of "**Alcudia**". Among others, some of the factors analyzed are, waste segregation, use of bulk and unpackaged products, promotion of local product consumption, consumption optimization,.

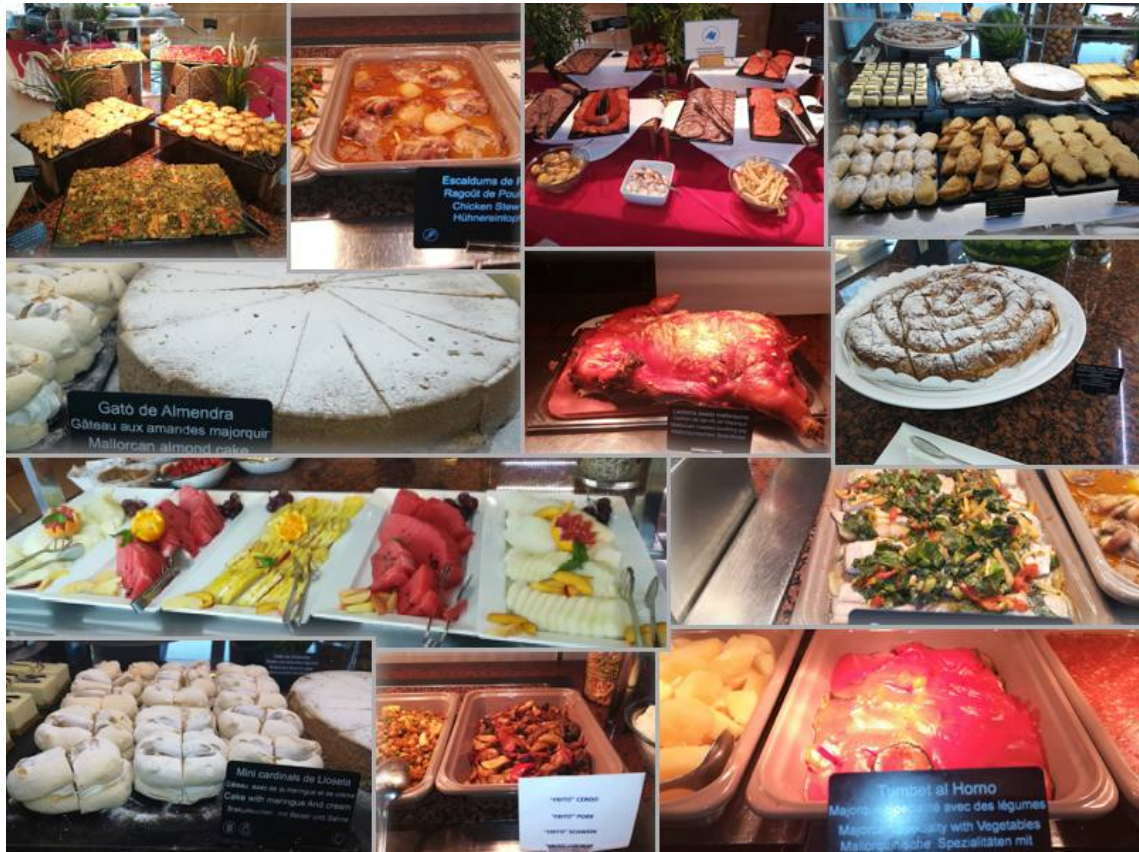


- Dissemination every year of **Natura 2000 Network Day** (May 21) and the space of the Natural Reserve of l'Albufereta, with the exhibition of informative posters and a photo contest of the Natural Reserve of l'Albufereta among customers.



- **Support for local product**

In order to strengthen and support the local product, Portblue Club Pollentia Resort & Spa works with local producers. As a result of these actions, local gastronomy is periodically enhanced, and the client is offered the opportunity to get to know our traditions and gastronomy.



- In the shop of the Portblue Club Pollentia Resort & Spa, the customer is offered the possibility of approaching the native flavors of the island and the local crafts





- In the rooms, supporting the local product, the customer is offered welcome gifts and complimentary items



- Collaboration with the **Spanish Association against Cancer** through the purchase of its products for internal use



serhuman
ATENCIÓN AL CLIENTE
902 457 458 Fax: 902 458 459

CUB POLLENTIA RESORT
PORTVIA S.A.
C/TA. DE ALUCUDIA A PUERTO DE POLLENSA KM.
ALUCUDIA (MALLORCA)
07420 BALAGUARD
Teléfono: 971546200



**FUNDACIÓN
CÁNCER Y VIDA**

TEL: INFORMACIÓN GRATUITO DE LA FUNDACIÓN: 800 804 938

F: 1 11/01/19 400.286

N.I.F. Cliente: A07089592 Código Cliente:

Albarán: 400.286 Fecha Albarán: 11/01/19 Su pedido: 400.275 de fecha: 11/01/19

Cód. Artículo	Descripción	Cantidad	Precio	Importe
1377	CAJA SOFUIT-MAZ VISIBILE A ENFERMOS DE CÁNCER 6,00 SOFT FRUIT B. ING.	2,00	80,50	161,00
15384	CÁNCER Y VIDA LUCHA POR LA VIDA. AGENCIA	1,00	18,00	18,00
14479	CARTEL 4 FEBRERO DIA MUNDIAL DEL CÁNCER	1,00	0,00	0,00
2726	BOLIGATO CÁNCER Y VIDA LUCHAMOS POR LA VIDA	5,00	0,00	0,00
2248	EXPOSITO CÁNCER Y VIDA LUCHAMOS POR LA VIDA	1,00	0,00	0,00
Subtotal				161,00
				18
				0,00 0%
				161,00 10%
				18,00 21%
				3,78
				199,88
				Exento

Forma de pago: REEMBOLSO
Vencimiento: 11/01/19 199,88
Banco: C/C

Reservados todos los derechos. No se permite la explotación económica ni la transformación de esta obra. Queda permitida la impresión en su totalidad. Fundación Cáncer y Vida, agradece a todas las personas la colaboración y ayuda que nos prestan a través de la adquisición del producto. Reservas realiza las observaciones sobre falta o rotura de mercancía en el albarán de la agencia. NO ADMITIMOS RECLAMACIONES PASADAS 72 HORAS

- Collaboration with the Townhall of “Alcudia” in the collection of dry food with a long-term expiration date, for altruistic donation in social canteens in the municipality. The campaign is carried out at the end of the season. Portblue Club Pollentia Resort & Spa as a company level and the hotel staff in particular, participate in this social action



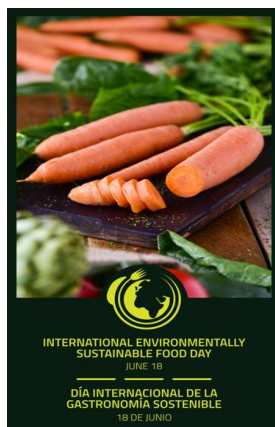
- Portblue Club Pollentia Resort & Spa is a **cardioprotected hotel**, obtaining the official SEMST certification (Spanish Society of Medicine and Safety at Work) that corroborates that they have defibrillator in their facilities and qualified personnel and prepared for handling in case of need.



During the few operating days of 2020 we worked on a list of World Days related to the environment and CSR, as well as their planning, promotion and involvement of staff and clients in the different activities and actions to be carried out, as well as the subsequent dissemination to through social networks. As a result, during this year we have carried out the following actions, all of them documented, disseminated through our own social networks and also included in the QR, <https://menus.portbluehotels.com/club-pollentia-resort-spa/> and screen in the Reception Hall for visualization and social and environmental awareness;

- **The World Day of Sustainable Gastronomy**

The World Day of Sustainable Gastronomy aims to promote eating habits that are more respectful with the environment and with local traditions. To this end, PortBlue Club Pollentia Resort & Spa prepared typical dishes from all over the country for its clients and organized a tasting of J. L. Ferrer wines, typical of Mallorca. The hotel was decked out with decorative centers made with fruit and vegetables and our youngest guests had fun playing top chef and sowing spices.





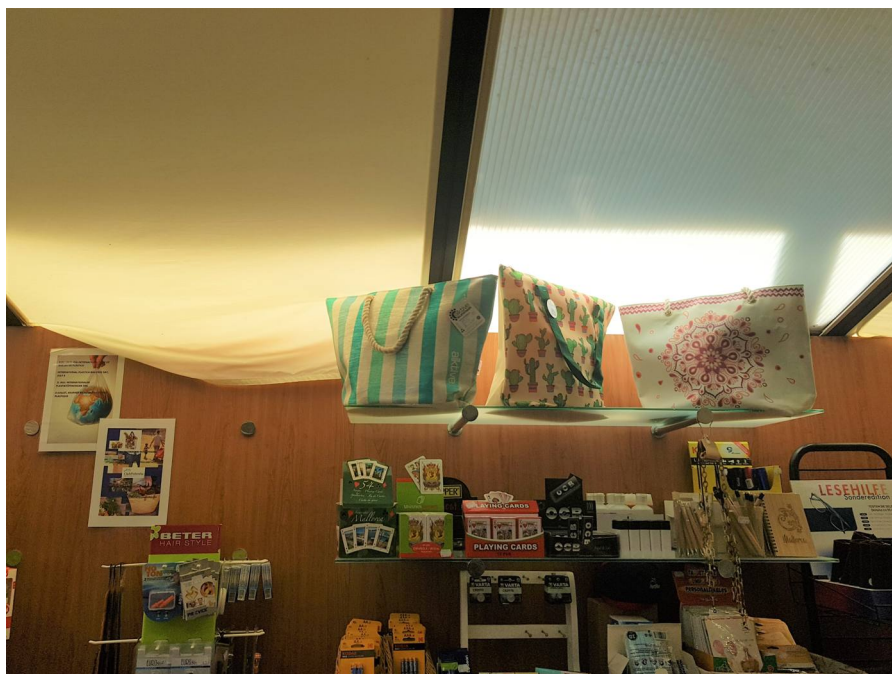
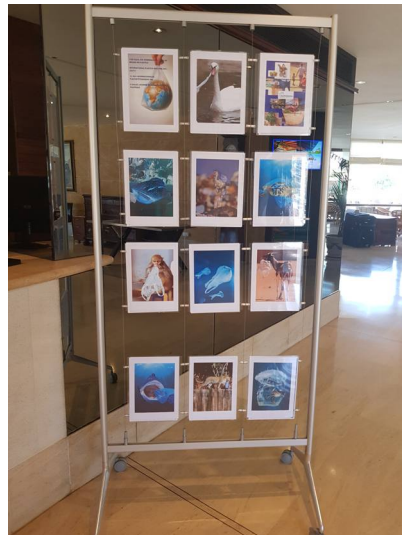
ClubPollentia

activ
cesmo®



- **The International Day Free of Plastic Bags**

The International Day Free of Plastic Bags aims to reduce single- use bags and promote their responsible consumption. Daily, plastic bags have become one of the most daily objects and also one of the most harmful to the environment. To help raise awareness, informative posters were placed around the hotel with photos of affected animals, requesting responsible consumption and decorated with wicker baskets. The store promoted the sale of wicker baskets and cloth bags and the little ones learned to play recycling the bags.



- **The World Day for the preservation of the Ozone Layer**

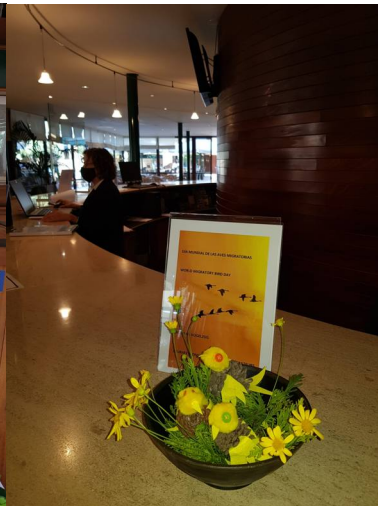
The World Day for the Preservation of the Ozone Layer aims to face the climate emergency that supposes the destruction of the ozone layer, fighting for the elimination and reduction of the use of substances that deplete it, while helping to protect it for the current generation and those to come. We must also protect human health and ecosystems by reducing ultraviolet radiation. To this end, informative posters were placed, the hotel was decorated and different types of awareness activities were carried out involving both our staff and customers, the smallest of the house being who, in a symbolic gesture, taught us to the greater the importance of nature to recover the ozone layer, creating a beautiful tree, hand in hand. And, in collaboration with Portblue Club Pollentia Resort & Spa, the company "Terragust" visited us, with the aim of promoting the reforestation of Mallorca and the adoption of trees.





- **World Migratory Bird Day**

World Migratory Bird Day aims to raise awareness of the importance of protecting birds and their habitats, since any alteration of the delicate balance of ecosystems can result in the disappearance of multiple species. To this end, informative posters were put up and the hotel was decorated with various types of birds. From the Hobby club, clients were given information about migratory birds that come to the “Albufereta” and the Albufera. And in the miniclub the children did multiple activities, recycling materials, in relation to the birds.

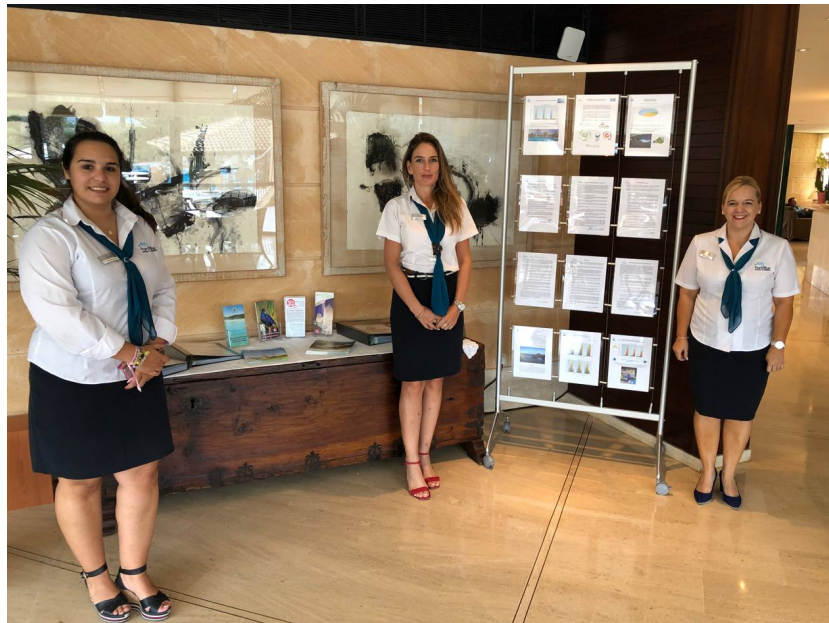


- **Collection of clothes for “La Palma”**

We have also managed a collection of clothing and other goods for those affected by the La Palma volcano in the Canary Islands. Initiative that arose from some of the hotel workers. For which the hotel has donated blankets and workers, baby towels and blankets, powdered milk, cereals, wipes, baby diaper packages and clothing.

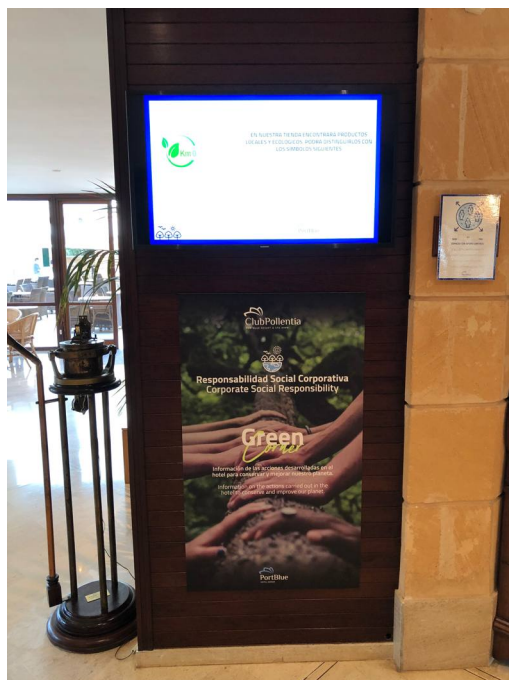


- Customers, as well as any interested person, could find details of these actions for social benefit and environmental behavior, through the Information Folder and the panel located in the Green Corner of Reception (before the Covid19 pandemic), as well as the Hobby Club.





- Due to the health protocols for the Covid19 pandemic, we have withdrawn all the information in physical format from Reception and the Hobby Club and have incorporated it into the digital support of the QR (<https://menus.portbluehotels.com/club-pollentia-resort-spa/>) and to the screen in the Reception Hall, so that any interested person can find information about these actions for social benefit and environmental behaviour in this way.



- As **accreditation** of all these actions, Portblue Club Pollentia Resort & Spa has a voluntary environmental management system, promoted by the European Union (**EMAS**), which allows organizations to evaluate and improve their **environmental behavior** and disseminate timely information to the public and to other interested parties, with the internationally recognized environmental certification **ISO 14001: 2015**, as well as the **sustainability certification** for the **Travelife** hotel sector.

